

# CORT Sustainability

On a mission to positively impact the communities we serve, while reducing our impact on the environment.



# We've developed a business model that's sustainable by nature.

CORT's furniture rental model keeps more greenhouse gases out of the atmosphere, so when you rent or buy from CORT, you're making the world a little greener.

Renting extends the life of every piece, keeping more furniture out of landfills and reducing the amount of greenhouse gas produced.

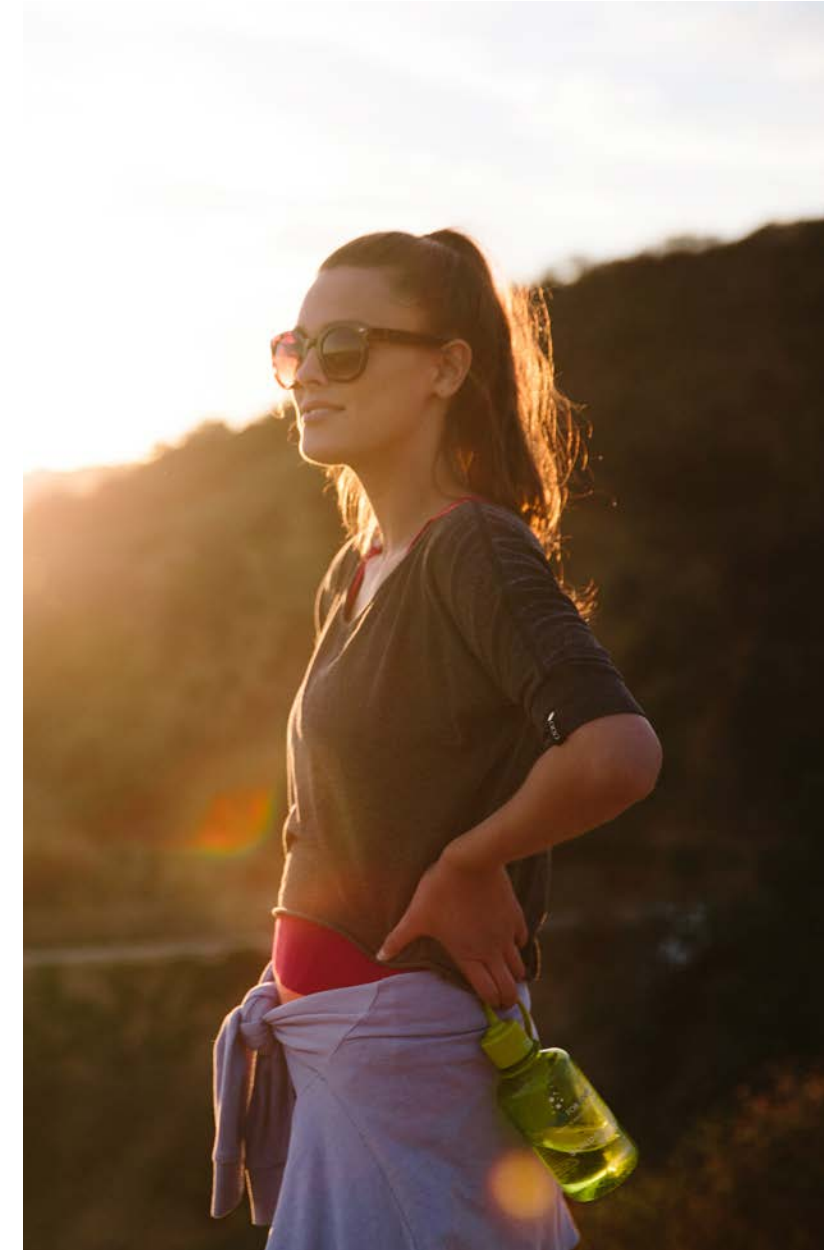
Purchasing previously leased and gently used furniture from CORT reduces waste and gives our customers access to furniture built to last at very affordable prices.



CORT rents furniture

**durable**

enough to be reused  
several times within  
its life cycle.



## 12.2 million

Tons of furniture and  
carpeting went into  
landfills in 2017.<sup>1</sup>



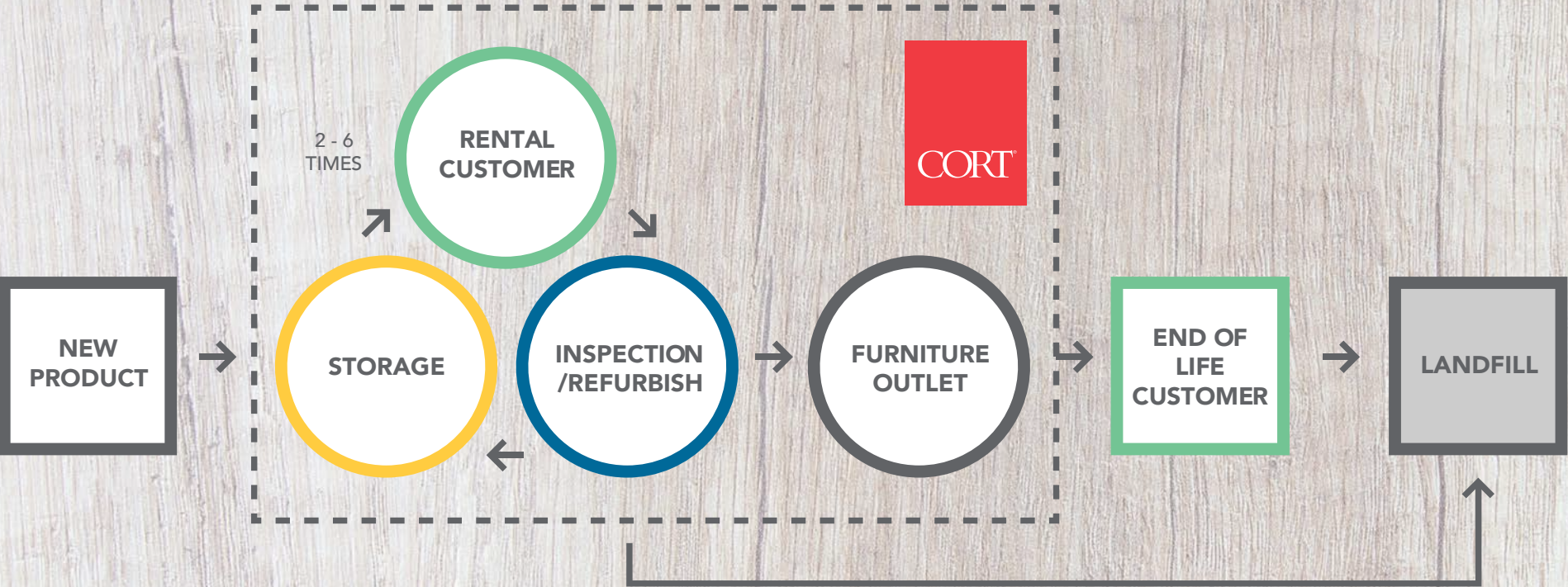
CORT's business  
model produces

## 66% less

greenhouse gas than  
direct sales models.<sup>2</sup>



# CORT Sustainable Business Model



# Direct Sales Business Model



# How does CORT's business model reduce waste?

Use. Fix. Reuse. Repeat. Buy.

## HOW IT WORKS:

- We invest in durable products manufactured to our high-quality standards and expertly maintain the pieces throughout their rental life at CORT.
- Our products are rented anywhere from two to six times, for a total of three to four years on average.
- This intentional longevity reduces waste.
- At the end of their rental life, furniture is delivered to a CORT Furniture Outlet to be sold to its forever home.
- The rental cycle generally produces some wear-and-tear on the furniture, but these pieces are thoroughly inspected, touched up, cleaned and prepped for sale prior to being shipped to the Furniture Outlet.



# Renting makes environmental sense.

Renting from  
CORT saves  
**368,862**  
tons of CO<sub>2</sub> from  
the atmosphere  
every year.<sup>3</sup>



CORT's furniture rental model empowers those who only need furniture temporarily to keep furniture out of landfills. Just because life is uncertain, or you simply want to swap out your furniture, doesn't mean you have to make a large carbon footprint in the world.

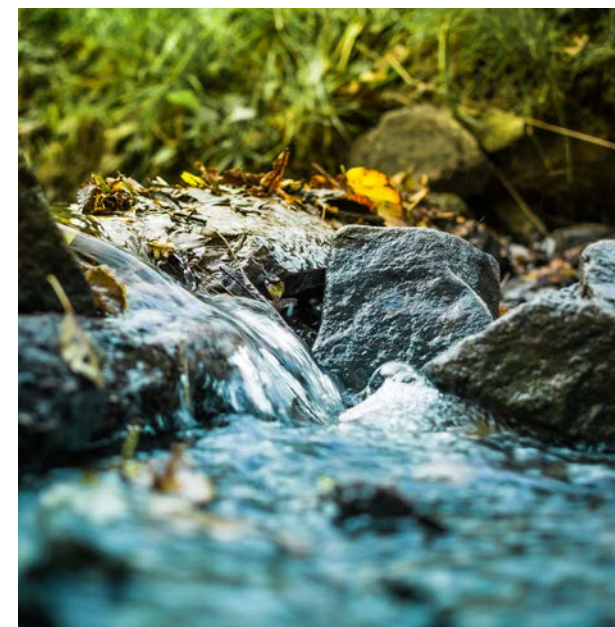
Furniture rental with CORT takes away the need to find a place to dispose of furniture when it's reached the end of its usefulness or you have reached the end of your need for it.



Renting also reduces the need to buy new products each time a new customer comes along.

## **THIS SAVES:**

- Fuel
- Shipping resources
- Raw materials
- Labor
- Natural resources

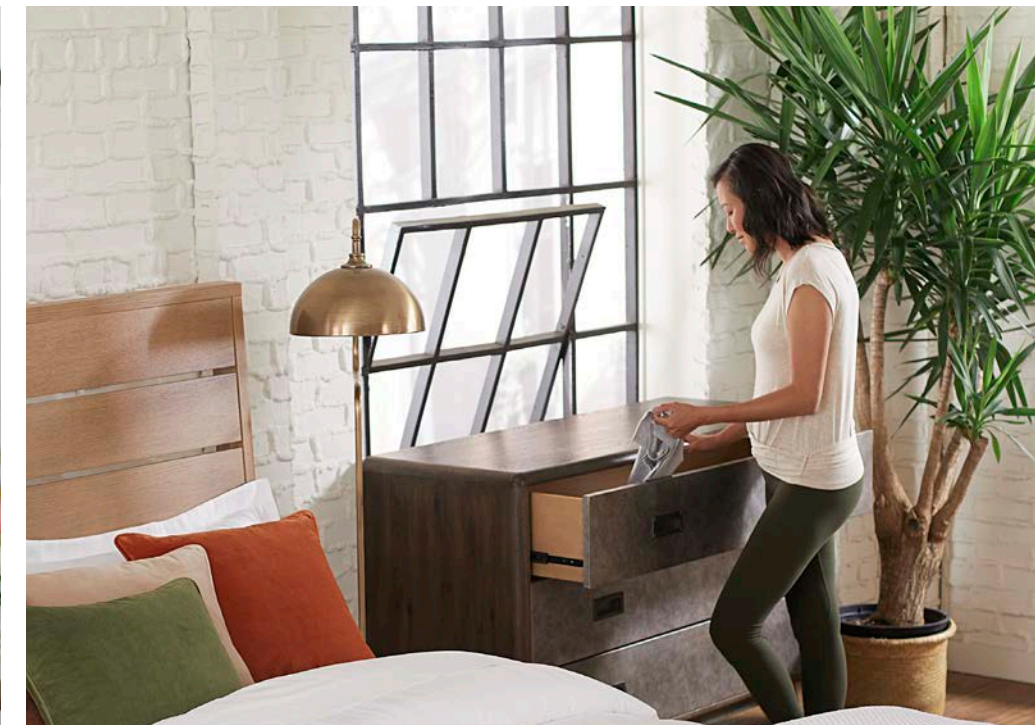




# Quality products that make your home, office, or event more sustainable.

Our sustainability efforts start with our products. Much like the hospitality industry, we've developed construction standards regarding hardwood frames, foam density, fabric construction and fiber content that guarantee durability.

Our commercial grade office furniture supports our business customers seeking LEED certification, or those who simply want sustainable business practices for their office.



**We're always looking  
for more ways to make  
an impact:**

We protect our furniture during delivery, pickup and storage with reuse in mind.

We've implemented an enterprise-wide recycling initiative.

We use state-of-the-art routing and logistics system to maximize fuel usage.





# How much does renting from CORT really save the environment?

CORT's business model saves 368,862 tons of CO<sub>2</sub> annually vs. competitors who sell furniture new.<sup>3</sup>

THAT'S THE EQUIVALENT OF:

70,684

Passenger vehicles kept off the road for one year

49,413

Homes' electricity use for one year

35,335

Homes' total energy use for one year

106,196

Tons of waste recycled instead of landfilled every year<sup>4</sup>

1. <https://www.epa.gov/facts-and-figures-about-materials-waste-and-recycling/durable-goods-product-specific-data>

2. PRé North America Inc.

3. PRé North America Inc.

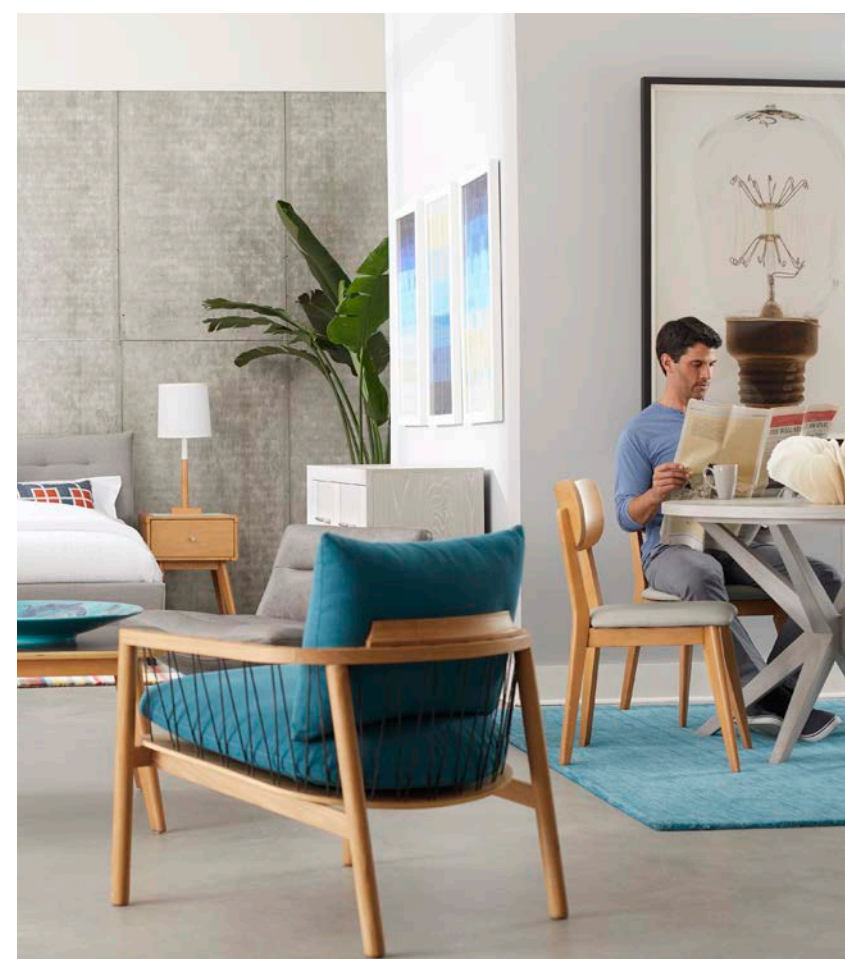
4. PRé North America Inc.





CORT®

Be a  
sustainable  
part of the  
furniture  
revolution.



Go to [cort.com](https://cort.com) to  
learn more and find  
a location near you.





[cort.com](https://cort.com) | 888.360.2678

© 2021 CORT. A Berkshire Hathaway Company.